



# XEMICS

Product Brief XE1201SK  
Starter Kit for 433MHz UHF  
Transceiver



## XE1201SK

### Starter Kit for 433MHz UHF Transceiver

#### General Description

The XE1201SK Starter kit is a flexible support tool that enables complete RF transmission. All the XE1201 modes and functions are accessible and controlled via User-friendly software installed on a WINDOWS based PC.

The XE1201SK can be used to achieve a field test or to validate a communication protocol. It can be also integrated for the first application prototype.

The XE1201SK is the perfect solution for Time to market application.

#### System Requirement

- WINDOWS based PC
- Oscilloscope or Application board
- Pattern generator or application board

#### Features

- User-friendly software
- Supply voltage 2.4 to 5.5V
- RF Output Power 5.5 dBm max
- Data rate 64 kbit/s
- Sensitivity -107dBm
- Carrier Frequency 433MHz
- Current Consumption 16 mA (Tx mode)  
6.5 mA (Rx mode)
- Printed Loop antenna

#### Kit Contents

- 2 XM1201 Module
- 2 Interface boards
- 2 Inter-board connectors
- XEMICS CD ROM (User-friendly Software)
- XE1201SK User Guide

Cool Solutions for Wireless Connectivity

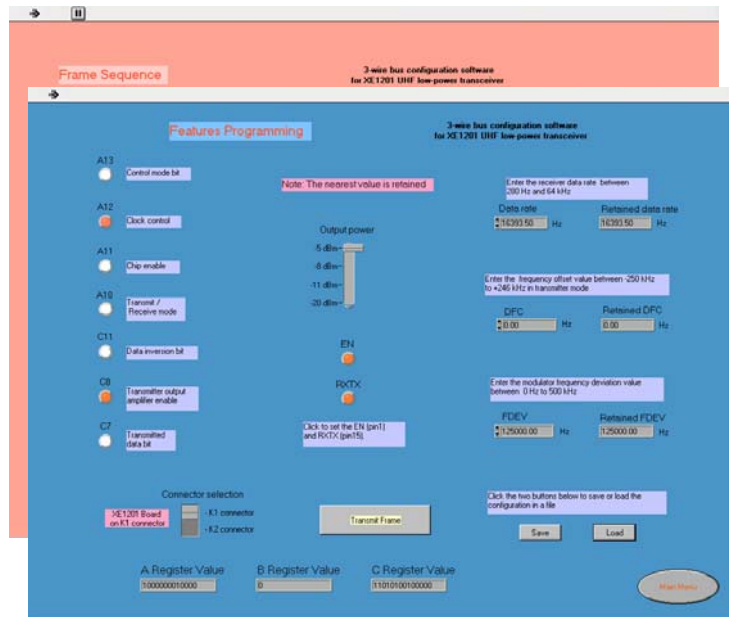
XEMICS SA • e-mail: [info@xemics.com](mailto:info@xemics.com) • web: [www.xemics.com](http://www.xemics.com)

## XE1201SK Software Set-up

On the main screens of the XE1201 configuration software, different menus are available and this allows a very high flexibility:

- Features programming menu
- Frames sequence menu

For example, the User-friendly software allows one to enter on the features programming screen the desired features; when all the data has been entered, selections are validated by a click on the Save button. Operations are executed after having clicked "Transmit Frame" button.



## XE1201SK hardware Set-up

Each module XM1201 is connected to an interface board. After the configuration of each transceiver via the user-friendly software, a pattern generator is connected to one module on the TXD pin. On the second module an oscilloscope is connected to RXD and CLKD pins in order to visualise the received data.

A typical application for using the XE1201SK is to insert an existing application board for data processing instead of using a pattern generator and an oscilloscope. The advantage is to achieve in the same time the validation of the protocol, a prototype and a field test.

